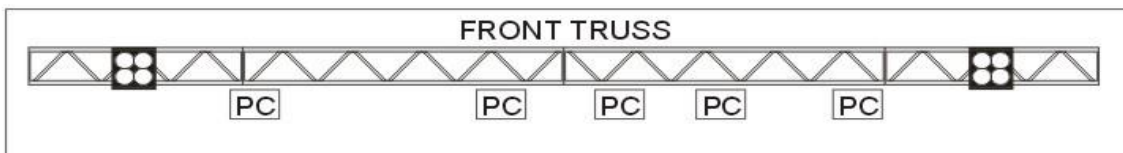
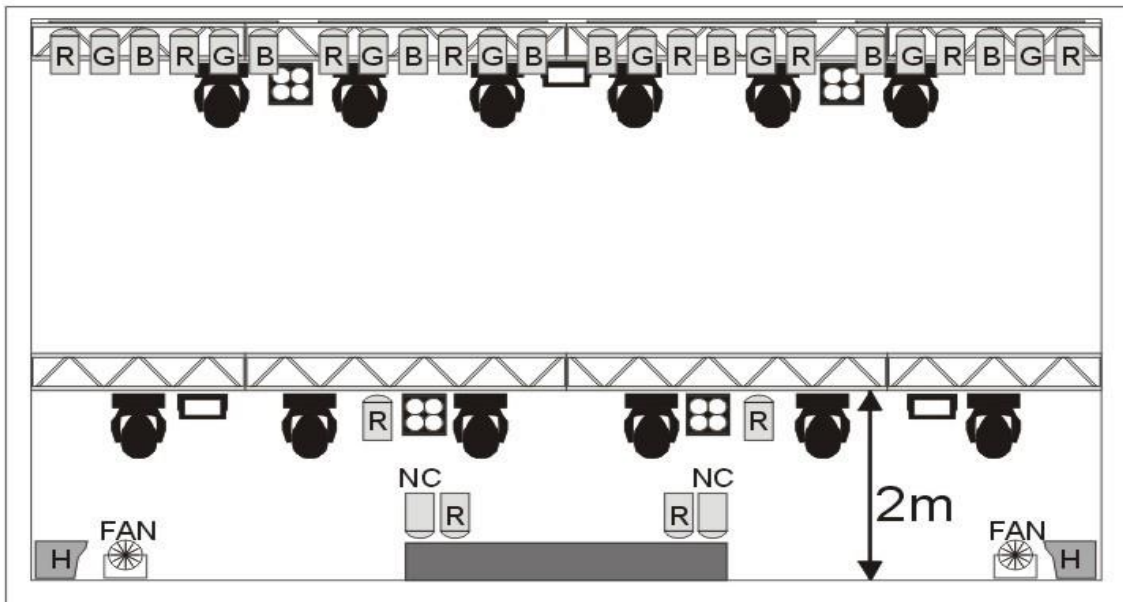




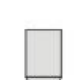



OŚWIETLENIE / LIGHT Krzysztof Krawczyk

KONTAKT: Piotr Michalski +48 501 259 155 pit1967@op.pl

1.	Moving Heads - spot min. 575W	12 szt.
2.	PAR 64 CP61 lub Moving Heads-Wash min. 575W	24 szt. 8 szt.
3.	PAR 64 CP61 (podłoga)	6 szt.
4.	Reflektor PC	5 szt.
5.	Blinders 2,6 kW	6 szt.
6.	Atomic 3000 lub inne Strobo DMX z efektem flash	3 szt.
7.	Hazer + Fan	2 szt.



-  moving head spot
-  martin atomic 3000
-  blinder
-  pc reflector
-  par reflector 500 W
-  hazer